

# Ellan Vannin

(DEAR ISLE OF MAN)

ARRANGED FOR CHORUS OF MIXED VOICES (S.C.T.B.)

Melody by

F. H. TOWNEND

Words by

ELIZA CRAVEN GREEN

Arranged by

MAURICE JACOBSON

Moderato con espressione

Soprano



1. When the sum - mer day is ov - er, And its bu - sy cares have  
3. Then mem - 'ries sweet and ten - der, Come like mu - sic's plain - tive

Key Bb { : s . d | m : - . r : d . t , | l , . d : - : t , . l , | s , . d : m : f

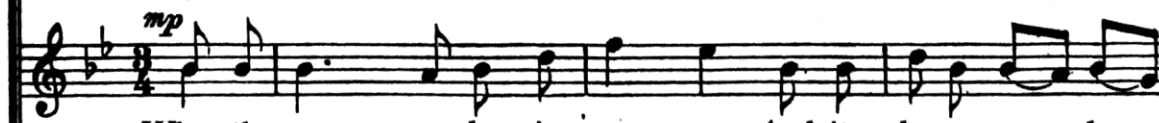
Contralto



1. When the sum - mer day is ov - er, And its bu - sy cares have  
3. Then mem - 'ries sweet and ten - der, Come like mu - sic's plain - tive

{ : m , . m , | s , : - . f , : m , . s , | d , . d , : - : s , . f , | m , . m , : s , : l , . f , }

Tenor



1. When the sum - mer day is ov - er, And its bu - sy cares have  
3. Then mem - 'ries sweet and ten - der, Come like mu - sic's plain - tive

{ : d , . d , | d : - . t , : d . m | s : f : d . d | m . d : d . t , : d . l , }

Bass



1. When the sum - mer day is ov - er, And its bu - sy cares have  
3. Then mem - 'ries sweet and ten - der, Come like mu - sic's plain - tive

{ : d , . d , | d , . d : - . s , : l , . m , | f , . l , : - : f , . l , | d . l , : m , : r , }

Moderato con espressione

Accompaniment\*  
(ad lib)



Time of performance 3 mins.

\* Accompaniment is provided for massed and other suitable occasions. In this case, verse 2 may be sung by a special choir or quartet, preferably unaccompanied. M.J.

flown, — I — sit be-neath the star-light With a wea-ry heart a -  
 flow, — Of the hearts in Ell-an Van-nin, That lov'd me long a -  
 { m : r : s . f | m : - . r : d . t , | l , d : - : t , . l , | s , d : m : r }

flown,— I sit— be-neath the star-light With a wea-ry heart a -  
 flow,— Of the hearts in— Ell-an Van-nin, That lov'd me long a -

{ s<sub>1</sub> . m<sub>1</sub> : s<sub>1</sub> : s<sub>1</sub> : s<sub>1</sub> { s<sub>1</sub> : se<sub>1</sub> : se<sub>1</sub> : l<sub>1</sub> . s<sub>1</sub> } | f<sub>1</sub> . l<sub>1</sub> :— : s<sub>1</sub> : f<sub>1</sub> | m<sub>1</sub> . m<sub>1</sub> : l<sub>1</sub> . d : t<sub>1</sub> }

flown, — I sit — be-neath the star - light With a wea-ry heart a -  
flow, — Of the hearts in Ell-an Van - nin, That lov'd me long a -

{ d, : t, : r. : r { d ..r : m .m : m .s } d : f : d...r | m .d : f : f }

flown,— I sit — be-neath the star- light With a wea-ry heart a -  
flow,— Of the hearts in Ell-an Van - nin, That lov'd me long a -


{ s, : s, : t, t, | d, d : - t, i, m, | f, : f, : f, f, | s, l, : r, : s, }

A musical score for the song 'The Rose Tree'. It features a treble and bass staff. The treble staff has a key signature of one flat (B-flat) and a common time signature. The melody is written in a simple, folk-like style with eighth and quarter notes. The bass staff provides a harmonic accompaniment with chords and single notes. The music is divided into measures by vertical bar lines.




lone: Then ri - ses like a vis - ion, — Spark-ling bright in na - ture's  
go; And I give, with tears and bless-ings, — My — fond-est thoughts to

{ d :— :t, d | r :d, t, :l, .s, | m .d :— :— | f, . . . . m :r .d :t, .d }




lone: Then ri - ses like a vis - ion, — Spark-ling bright in na - ture's  
go; And I give, with tears and bless-ings, — My — fond-est thoughts to

{ d :— :s, .l, | t, :l, .s, :f, .r, | s, .m, :— :— | f, . . . . s, :l, .l, :t, .l }



lone, Then ri - ses like a vis - - ion,  
go; And I give, with tears and bless - - ings,

{ m :— :s, .s, | s :— :s, :l, .t, | d :— :s, :m, d | : : }



lone: Spark-ling bright in na - ture's  
go; My — fond-est thoughts to

{ d, :— : | : : | : : | r, . . . . m, :f, .fe, :s, .l, }



*mf* *dim.*

glee, My own dear Ell-an Van-nin, With its green hills by the sea.  
 thee My own dear Ell-an Van-nin, With its green hills by the sea.

|| r :— :d .r | m :— .r :d .t, | l, .d :— { :d .d | s .s :l :s | d :c | :t, .l, | s, .d :m :r | d :c | ||

*mf* *dim.*

glee,— My own dear Ell-an Van - nin, With its green hills by the sea.  
 thee— My own dear Ell-an Van - nin, With its green hills by the sea.

|| s, .f, :m, .f, :m, .r, | d, :— .f, :m, .s, | f, .l, :— .f, :d, .d, | d, .m, :l, :t, | d :c | ||

*mf* *dim.*

My — own dear Ell-an Van - nin, With its green hills by the sea.  
 My — own dear Ell-an Van - nin, With its green hills by the sea.

|| :s :— .f | m :— .t, :d .d | d :f .l :s .f | m .d :f :f | m :c | ||

*mf* *dim.*

glee,— My own dear Ell-an Van-nin, With its green hills by the sea.  
 thee— My own dear Ell-an Van-nin, With its green hills by the sea.

|| t, :s, :s, | d, .s, :— .s, :l, .m, | f, .f, :— :f, .f, | s, .l, :r, :s, | d, :c | ||

*mf* *dim.*

† Omit pause before Coda.

† If sung unaccompanied, Coda follows verse 3, otherwise finish here.  
 If desired, verse 3 may be omitted, in which case the Coda will follow v. 2

Verse 2 may be sung as Quartet

*p*

2. Then I hear the wave-lets mur - mur, As they kiss the fai - ry

*p*

2. Then I hear the wave-lets mur - mur, As they kiss the fai - ry

*mf*

2. Then I hear the wave-lets mur-mur, As they kiss the fai - ry

*p*

2. Then I hear the wave-lets mur - mur, As they kiss the fai-ry

shore;— Then be - neath the em'rald wa - ters Sings the mer-maid as of

shore; Then be - neath the em'rald wa - ters Sings the mer-maid as of

shore;— Then be - neath the em'rald wa-ters Sings the mer-maid as of

shore; Then be - neath the em'rald wa - ters Sings the mer-maid as of



yore.  
 yore.  
 yore; And the Fair Isle shines with beau-ty, — As in youth it dawn'd on  
 yore; And the Fair Isle shines with beau - - ty, As in youth it dawn'd on

*mf* My own dear Ell-an Van - nin, With its green hills by the sea. *pp* *D.C. v. 3*  
*mf* me My own dear Ell-an Van - nin, With its green hills by the sea. *pp*  
*f* me My own dear Ell-an Van-nin, — With its green hills by the sea. *p*  
*mf* me My own dear Ell-an Van - nin, With its green hills by the sea. *pp* *D.C. v. 3*

## CODA. (as a memory)

*pp* *morendo*

Mm

{ :t, .l, | s, .d :m :r | d :s, :— | — :— :— | — :— ||

*pp* *morendo*

Mm

{ :s, .f, | m, :l, d :— .t, | d :s, :f, | m, :— :— | — :— ||

*pp* *morendo*

Mm

{ :d | m .d :f :— | m :— :r | d :— :— | — :— ||

*pp* *morendo*

Mm

{ :m, .f, | s, .l, :r, :s, | d .s, :m :r | d :— :— | — :— ||

*pp* *morendo*